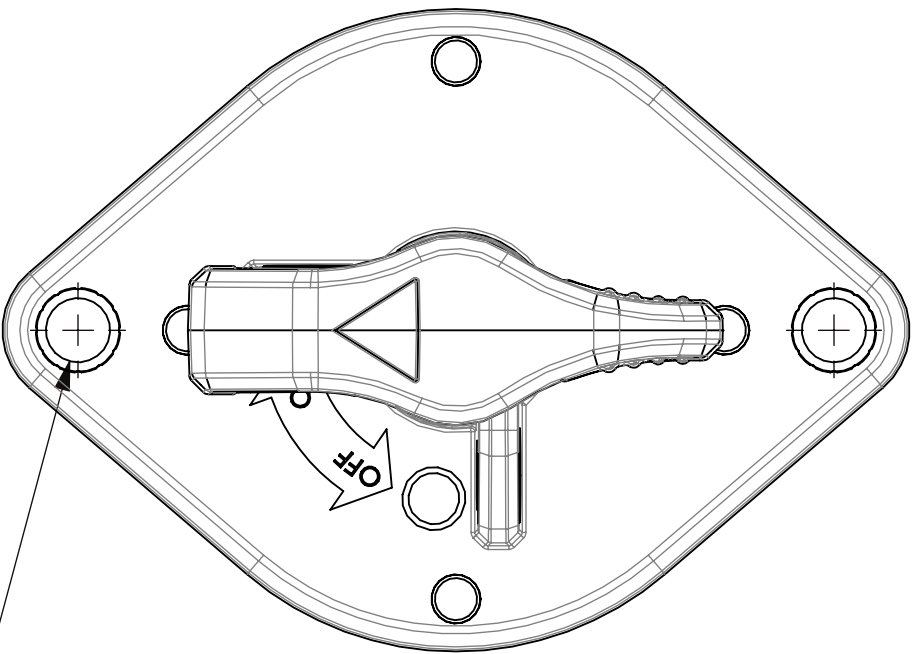
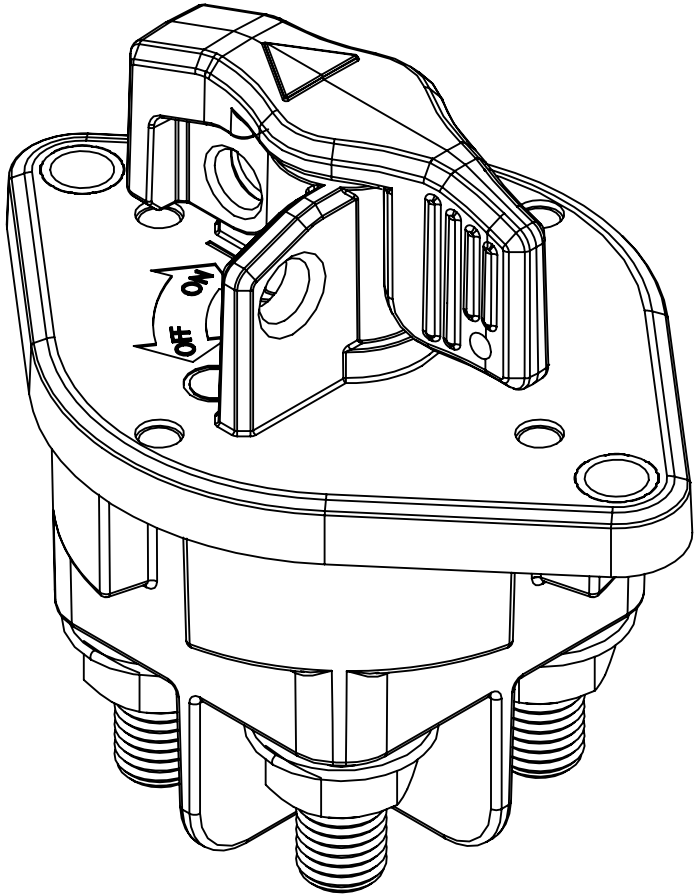


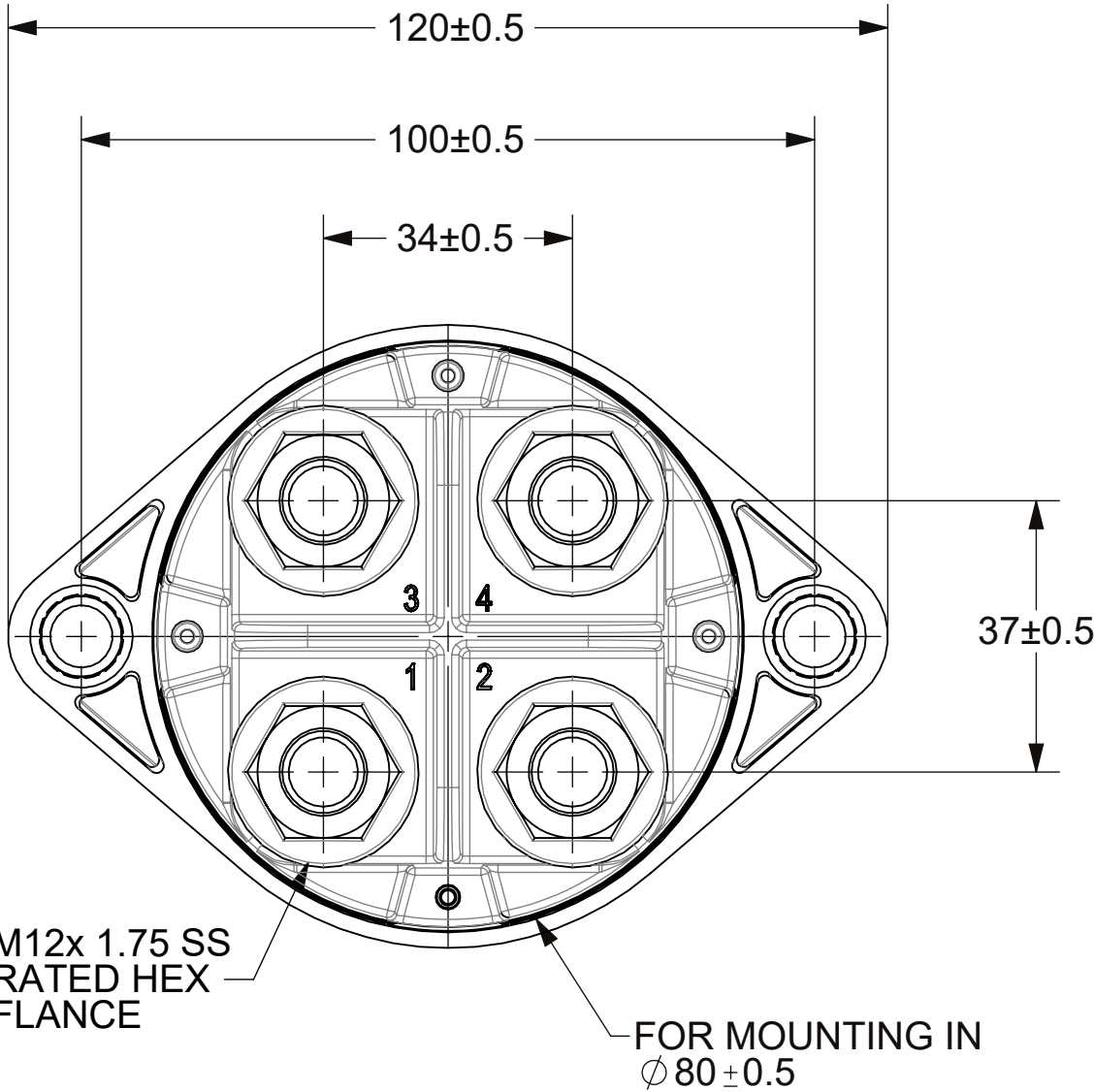
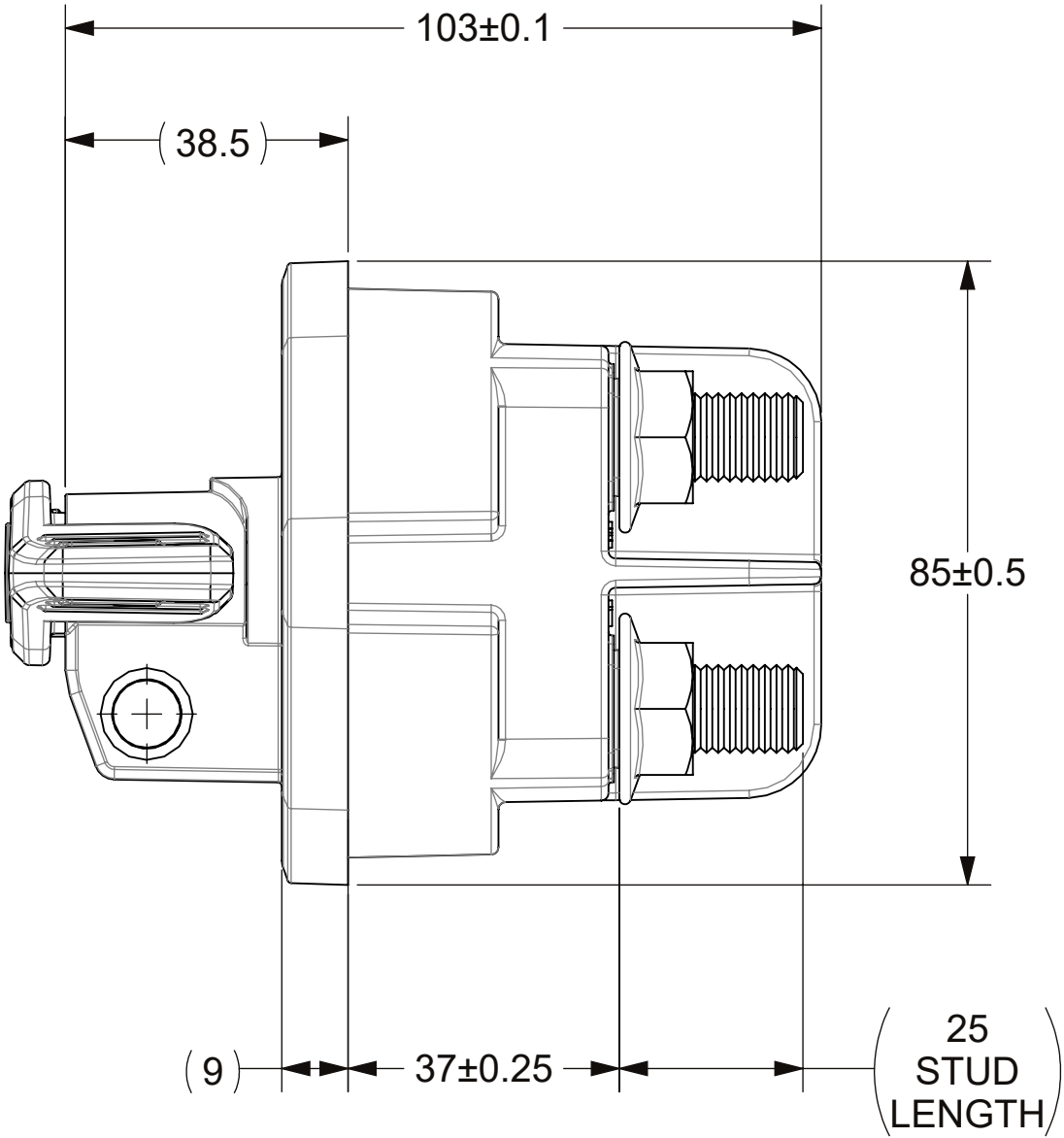
REVISIONS				
ZONE	REV.	DESCRIPTION	DATE	APPROVED
	A	PCO #5300217, INITIAL RELEASE, DSILVA	2/23/2023	S.CASTILLO

NOTES: (UNLESS OTHERWISE SPECIFIED)

- MATERIAL:
 1. KNOB: POLYMER, BLACK.
 2. O-RING: SILICONE.
 3. RIVET: STAINLESS STEEL.
 4. CASE: POLYMER, BLACK.
 5. SLEEVE: BRASS.
 6. GASKET: THERMOPLASTIC.
 7. BUS: COPPER.
 8. SPRING: STAINLESS STEEL, RED.
 9. BACKPLATE: POLYMER, BLACK.
 10. NUT: STAINLESS STEEL.
- ASSOCIATED CAD FILE DEFINES ALL NON-DIMENSIONED FEATURES.
- PART TO COME WITH HARDWARE.

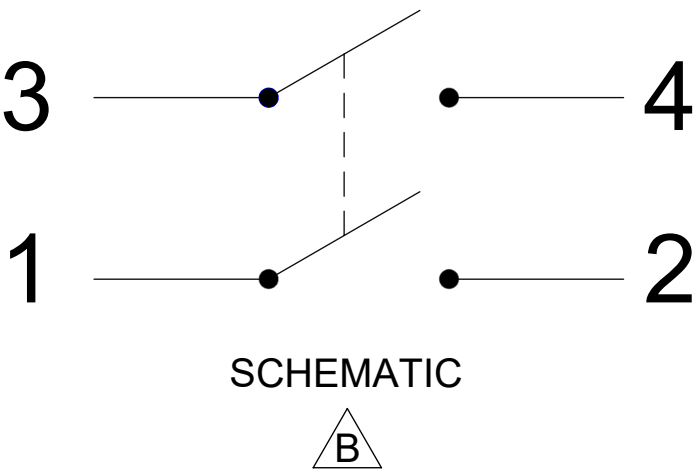


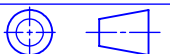
2X ϕ 8.50
FOR M8 OR
5/16 MOUNTING

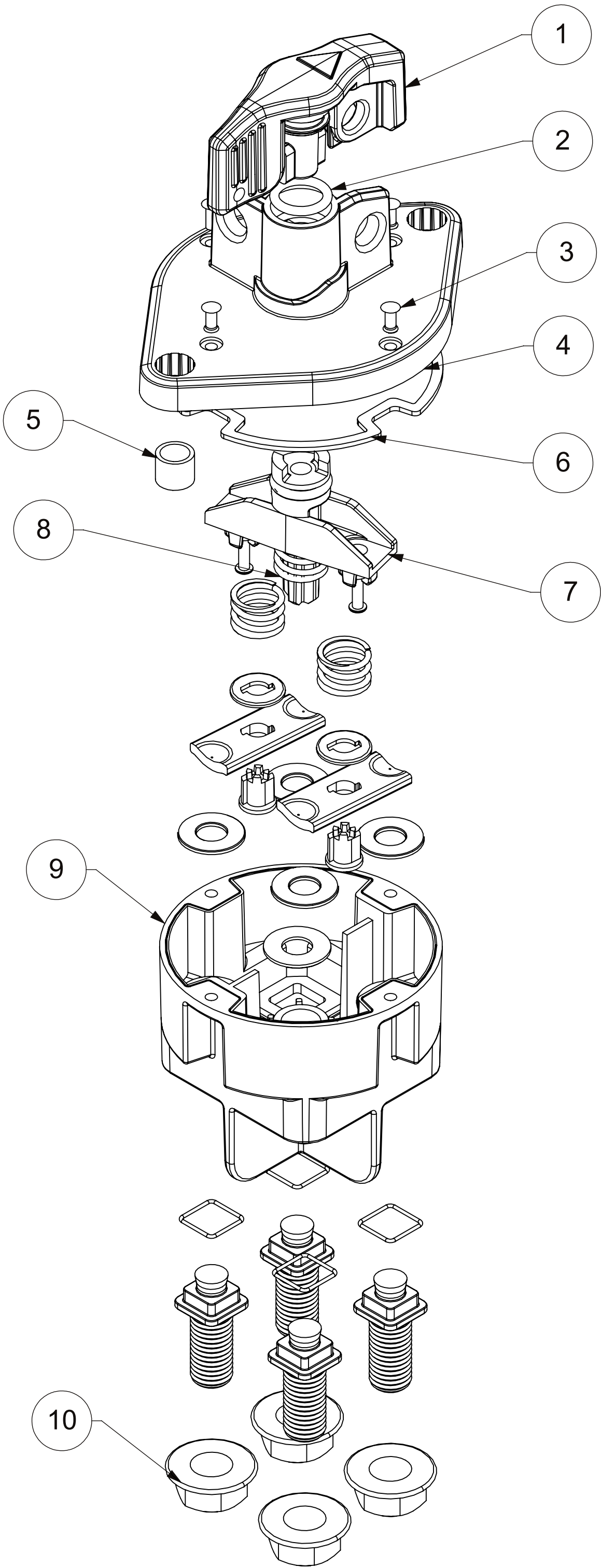


NUT M12x 1.75 SS
SERRATED HEX
FLANGE



FOR MOUNTING IN
 ϕ 80±0.5



TOLERANCES UNLESS OTHERWISE SPECIFIED				
ONE PLACE DECIMAL		±0.05	THREE PLACE DECIMAL ±0.100	
TWO PLACE DECIMAL		±0.20	ANGULAR ±2°	
DIMENSIONS ARE SHOWN IN MILLIMETERS. DIMENSIONS AND TOLERANCES ARE DEFINED ACCORDING TO ANSI/ASME Y14.5-1994.				
PER CHNPD20-008 PROCEDURE	●	FIT/ FUNCTION CRITICAL CHARACTERISTICS		
	<S>	SAFETY/ COMPLIANCE CRITICAL CHARACTERISTICS SYMBOL		
	CPK	DENOTES CPK DIMENSIONS MINIMUM CPK VALUE		
	(ST)	DENOTES A CHARACTERISTIC THAT PROVIDES AN INDICATION OF PROCESS PERFORMANCE PROCEDURE FOR MEASUREMENT AND TRACKING TO BE DEFINED IN LITTELFUSE INSPECTION INSTRUCTIONS		
	CP	DENOTES CP DIMENSIONS. -MINIMUM CP VALUE MUST BE WITHIN THE DIMENSIONAL LIMITATIONS SHOWN ON DRAWING AND INITIALLY LOCATED TO ALLOW FOR MAXIMUM TOOL LIFE		
	NAME		DATE	
DRAWN	DSILVA	1/9/2023		
CHECKED	S.CASTILLO	2/23/2023		
	-	-		
	-	-		
FORM NO. CVP-PE40-0005 REV B				
THIRD ANGLE PROJECTION				
		TITLE		
DO NOT SCALE DRAWING		SWITCH MASTER TR 2 POLE 300A (CB)		
		SIZE C DWG. NO. OUTLINE		
		OL-880302	REV. A	
		SCALE 1:2	SHEET 1 OF 2	



10	-	NUT M12X1.75X25 SS HEX FLANGE	4	EA
9	-	BACKPLATE SA	1	EA
8	-	SPRING .598 L X .614 OD X .072, SS	1	EA
7	-	BUS COPPER SA	1	EA
6	-	GASKET BATTERY DISCONNECT DUAL	1	EA
5	-	SLEEVE BATTERY DISCONNECT DUAL	2	EA
4	-	CASE BATTERY DISCONNECT DUAL	1	EA
3	-	RIVET BATTERY DISCONNECT SS	4	EA
2	-	O-RING 1-2X3-32 SILICONE 70A	1	EA
1	-	KNOB BATTERY DISCONNECT DUAL	1	EA
NO	COMPONENT NO	DESCRIPTION	QTY	U/M

BILL OF MATERIAL				
TOLERANCES UNLESS OTHERWISE SPECIFIED				
ONE PLACE DECIMAL ±0.05 THREE PLACE DECIMAL ±0.100 TWO PLACE DECIMAL ±0.20 ANGULAR ±2°				
DIMENSIONS ARE SHOWN IN MILLIMETERS. DIMENSIONS AND TOLERANCES ARE DEFINED ACCORDING TO ANSI/ASME Y14.5-1994.				
PER CHNFPD20-008 PROCEDURE	●	FIT/ FUNCTION CRITICAL CHARACTERISTICS		
	<S>	SAFETY/ COMPLIANCE CRITICAL CHARACTERISTICS SYMBOL		
	CPK	DENOTES CPK DIMENSIONS MINIMUM CPK VALUE		
	(ST)	DENOTES A CHARACTERISTIC THAT PROVIDES AN INDICATION OF PROCESS PERFORMANCE. PROCEDURE FOR MEASUREMENT AND TRACKING TO BE DEFINED IN LITTELFUSE INSPECTION INSTRUCTIONS		
	CP	DENOTES CP DIMENSIONS. -MINIMUM CP VALUE MUST BE WITHIN THE DIMENSIONAL LIMITATIONS SHOWN ON DRAWING AND INITIALLY LOCATED TO ALLOW FOR MAXIMUM TOOL LIFE		
DRAWN		NAME	DATE	<div>Littelfuse Expertise Applied Answers Delivered</div> <div>TITLE SWITCH MASTER TR 2 POLE 300A (CB)</div> <div>FORM NO. CVP-PE40-0005 REV B THIRD ANGLE PROJECTION</div> <div>SIZE C DWG. NO. OUTLINE REV. A</div> <div>DO NOT SCALE DRAWING SCALE 1:5 SHEET 2 OF 2</div>
CHECKED		DSILVA	1/9/2023	
		S.CASTILLO	2/23/2023	