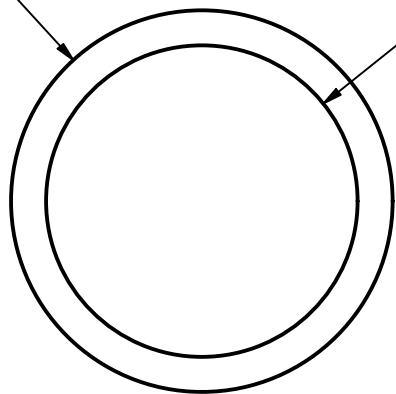
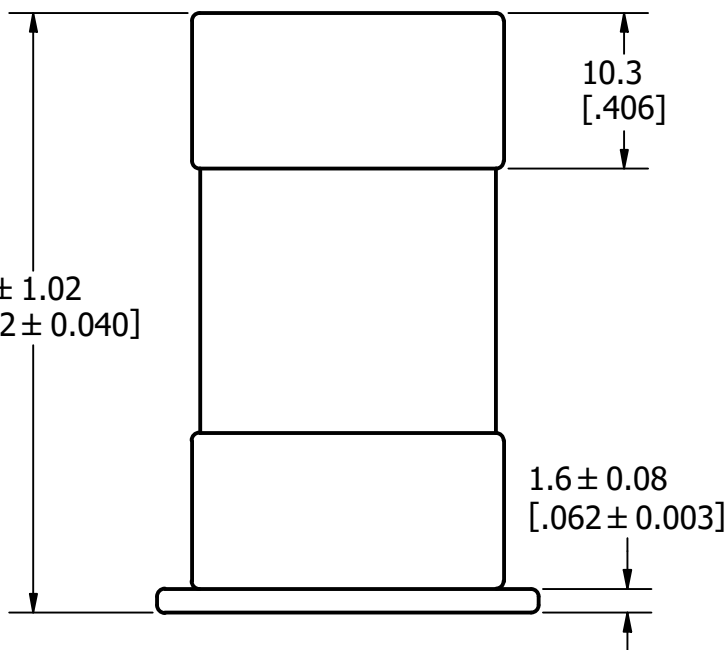


Ø25.2 ± 0.15
[Ø.994 ± 0.006]



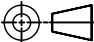

Ø20.6 ± 0.15
[Ø.812 ± 0.006]

39.7 ± 1.02
[1.562 ± 0.040]



REVISION		
REV	DATE	DESCRIPTION
A	8/9/22	525545GCP - RELEASE MRY
B	10/28/24	528243ECP/D - ADD TOLERANCES MRY

APPROXIMATE SHIPPING WEIGHT: 10 FUSES / 0.84 LBS.

1				
NO	COMPONENT NO	DESCRIPTION	QTY/M	U/M
BILL OF MATERIAL				
<S>	CRITICAL CHARACTERISTIC FOR PART SAFETY/COMPLIANCE			
●	DENOTES CRITICAL CHARACTERISTICS.			
CPK	DENOTES CPK DIMENSIONS, -MINIMUM CPK VALUE			
Ⓢ	DENOTES A CHARACTERISTIC THAT PROVIDES AN INDICATION OF PROCESS PERFORMANCE. PROCEDURE FOR MEASUREMENT AND TRACKING TO BE DEFINED IN LITTELFUSE INSPECTION INSTRUCTIONS.			
CP	DENOTES CP DIMENSIONS, -MINIMUM CP VALUE MUST BE WITHIN THE DIMENSIONAL LIMITATIONS SHOWN ON DRAWING AND INITIALLY LOCATED TO ALLOW FOR MAXIMUM TOOL LIFE.			A
MATL SPEC			FINISH	
DRW JMoler	DATE 8/3/2022	SCALE NTS	FINISH GOOD WT GRAMS/PIECE	
UNLESS OTHERWISE SPECIFIED, DIMENSIONS ARE IN MILLIMETERS, DIMENSIONS IN BRACKETS [] ARE INCHES DIMENSIONING AND DO NOT INCLUDE PLATING. TOLERANCING TO BE INTERPRETED IN ACCORDANCE WITH ANSI Y14.5M-1994				
3RD ANGLE PROJECTION 				
TITLE JLLS 35-60A OUTLINE				
 Littelfuse® CHICAGO, ILLINOIS 60631		REVISION B	DRWG NO. OL-JLLS060	SHEET 1 OF 1