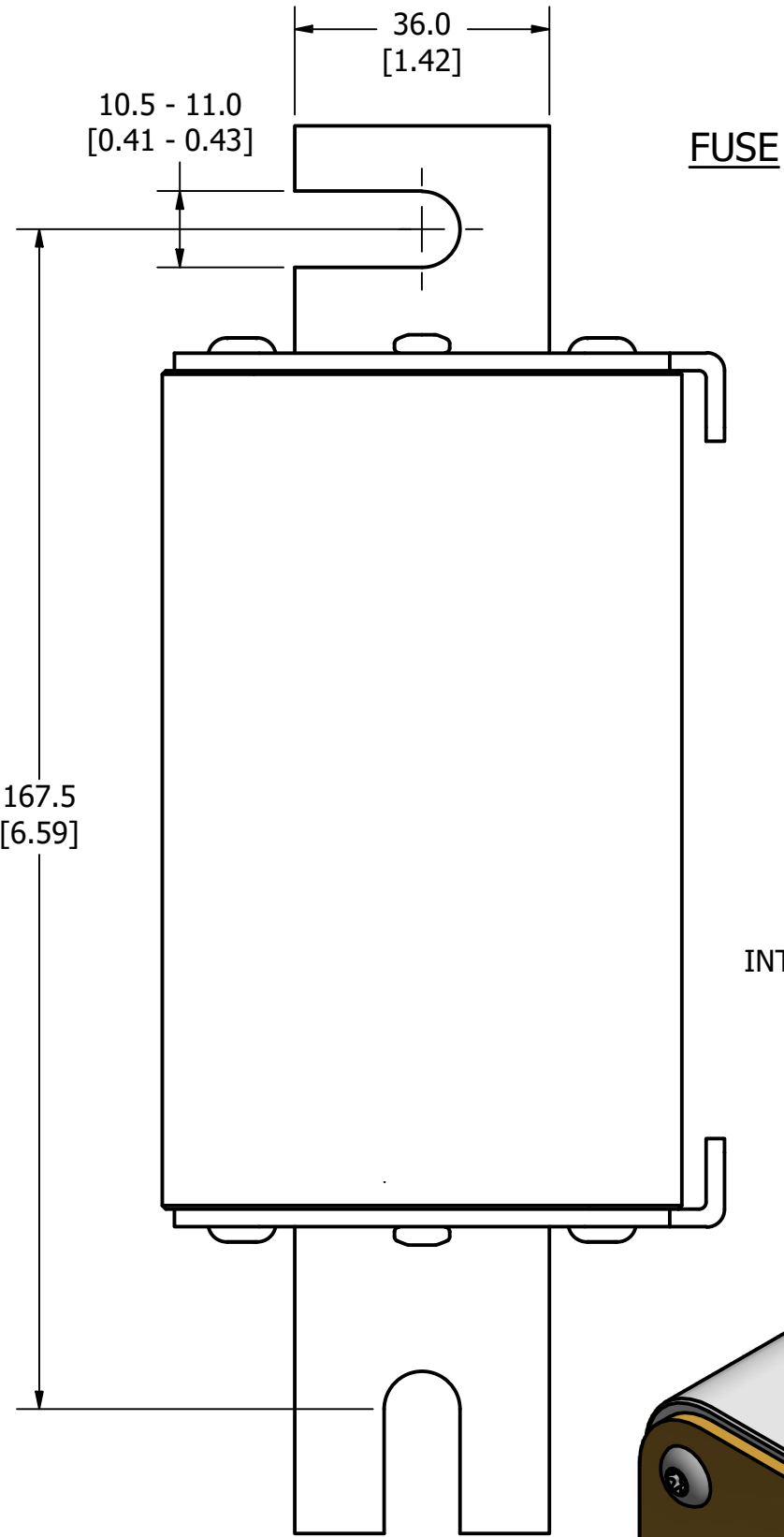
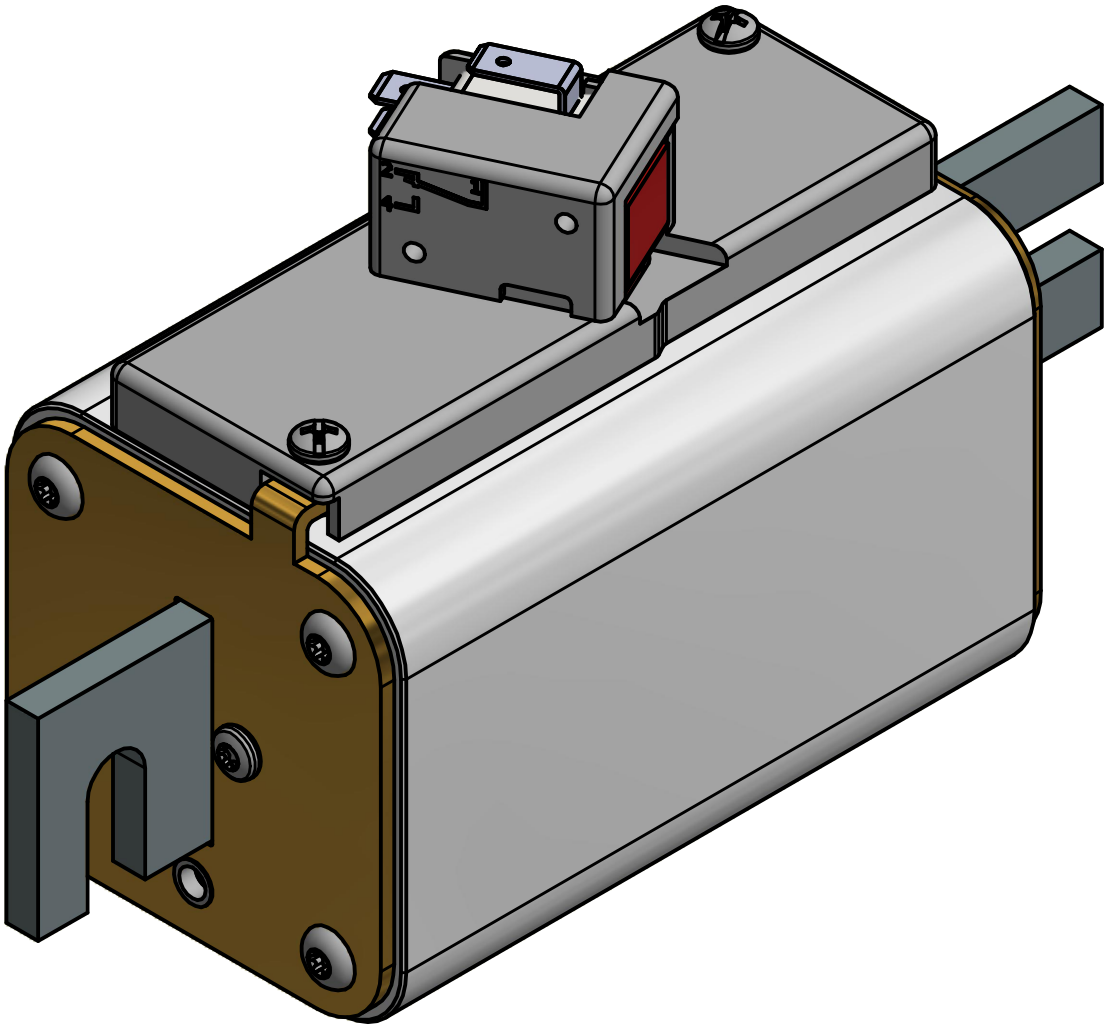
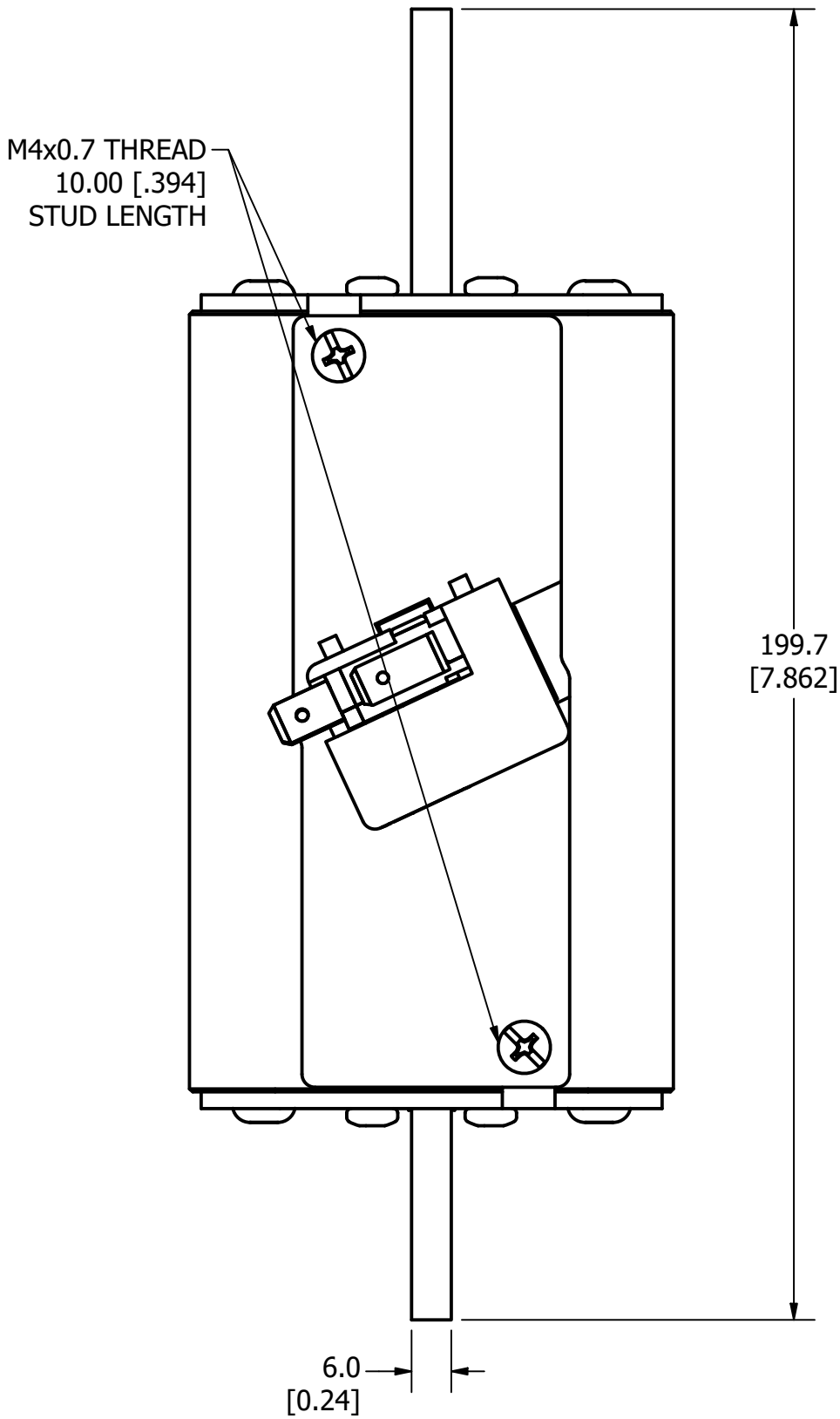


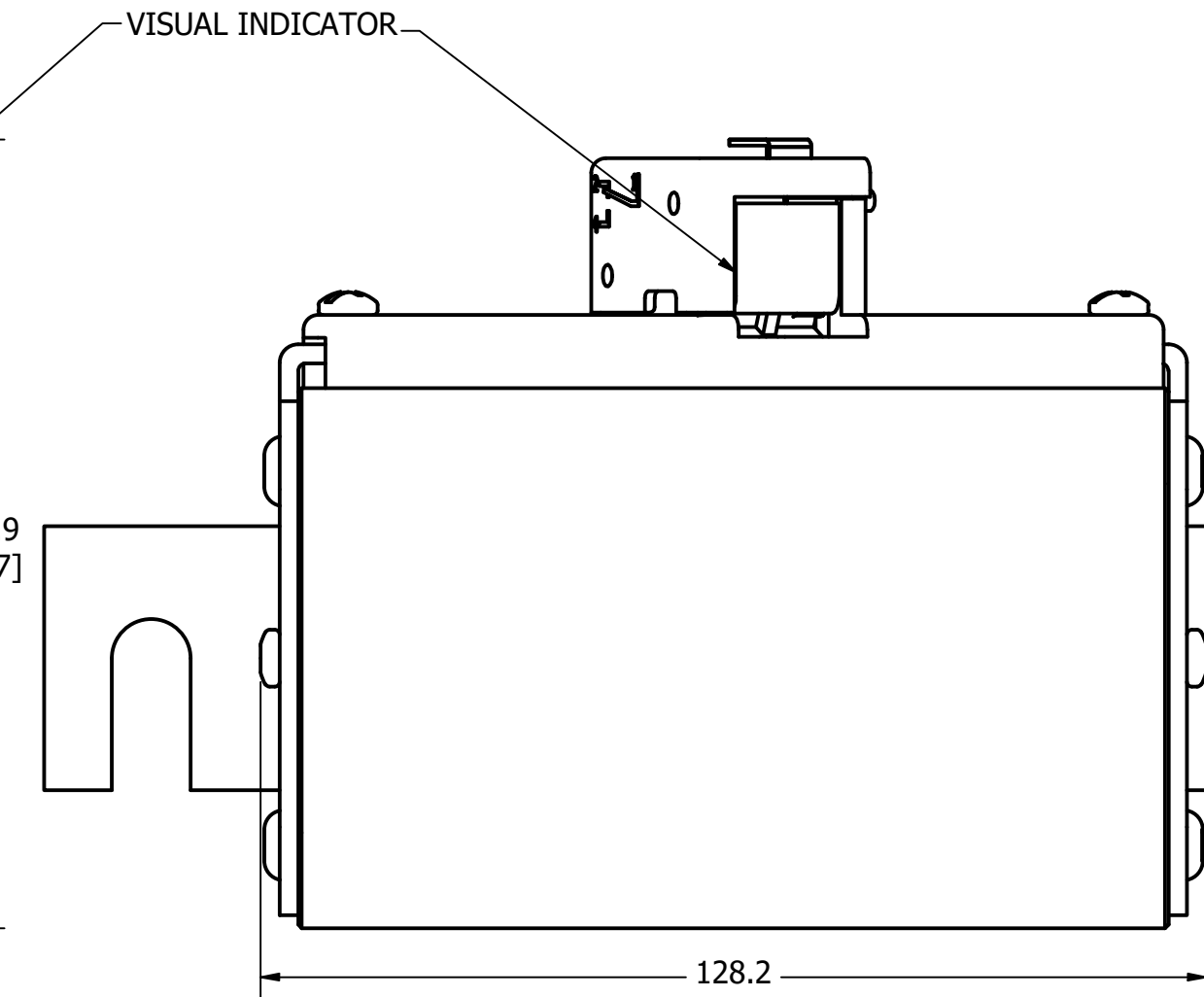
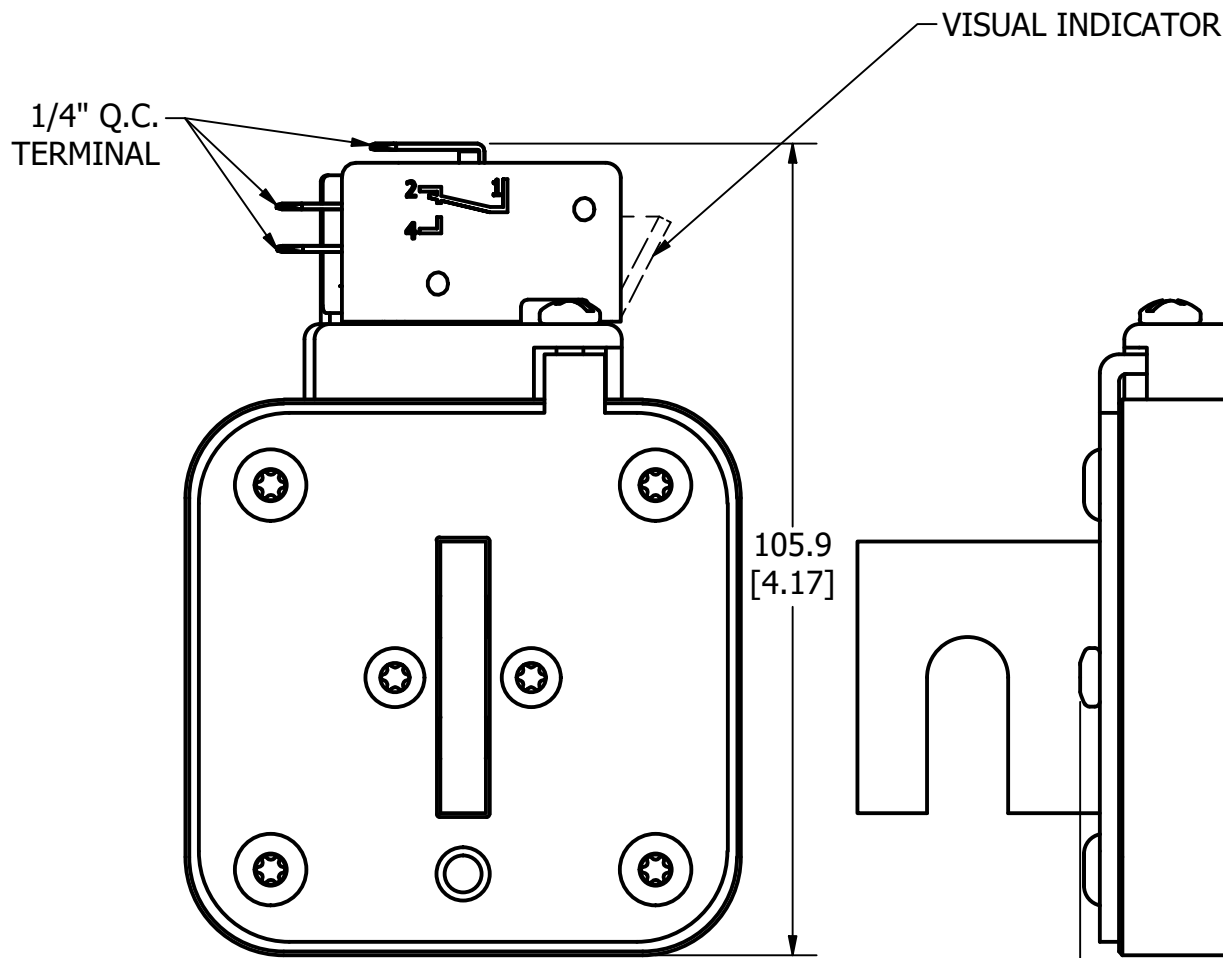
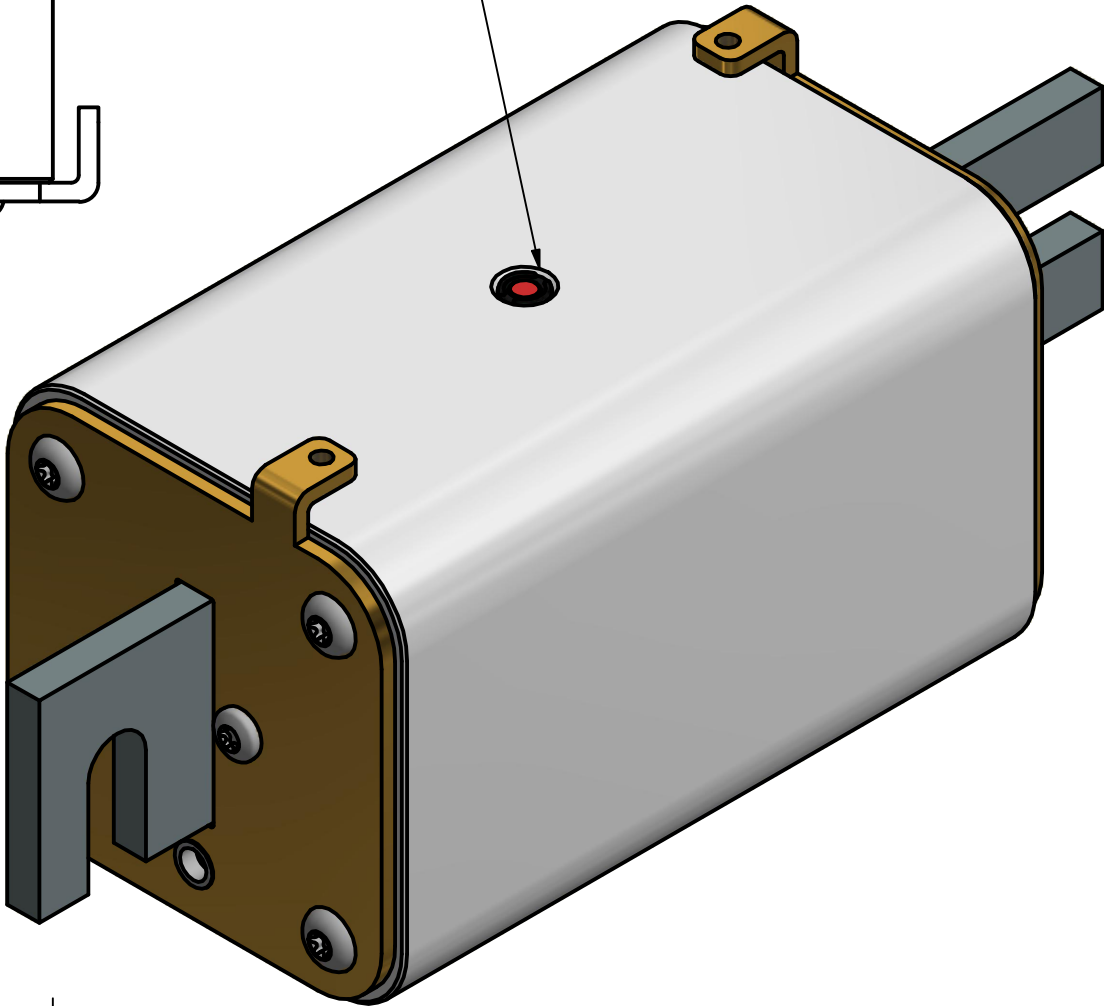
MOUNTING SPECS:  
RECOMMENDED FASTENER: M10 OR 3/8"  
TIGHTENING TORQUE (REFERENCE ONLY): 26Nm

REVISION		
REV	DATE	DESCRIPTION
A	3/13/20	522085GCP - RELEASE MRY
B	3/23/20	522118ECP/D - UPDATE LENGTH MRY
C	10/25/23	526838ECP/D - ADD VIEW W/O MICROSWITCH MRY
D	7/2/24	527900ECP/D - ADD AND REMOVE DIMENSIONS AND TOLERANCES JTM

FUSE WITH MICROSWITCH

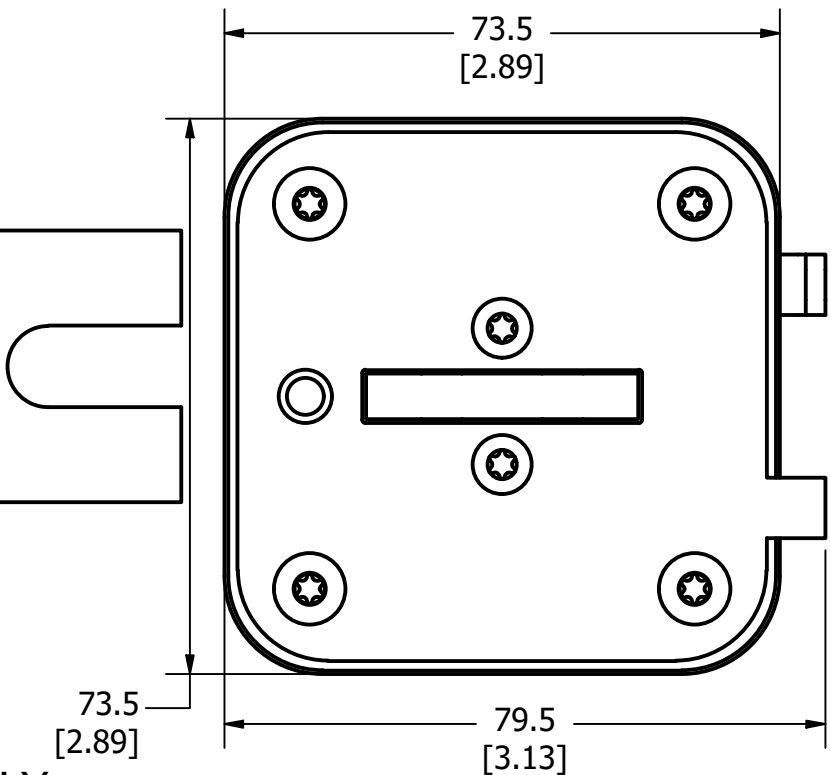


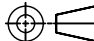

INTERNAL INDICATOR



FUSE WITH MICROSWITCH

FOR REFERENCE ONLY



<S>		CRITICAL CHARACTERISTIC FOR PART SAFETY/COMPLIANCE	
●		DENOTES CRITICAL CHARACTERISTICS.	
CPK		DENOTES CPK DIMENSIONS, -MINIMUM CPK VALUE	
(ST)		DENOTES A CHARACTERISTIC THAT PROVIDES AN INDICATION OF PROCESS PERFORMANCE. PROCEDURE FOR MEASUREMENT AND TRACKING TO BE DEFINED IN LITTELFUSE INSPECTION INSTRUCTIONS.	
CP		DENOTES CP DIMENSIONS, -MINIMUM CP VALUE MUST BE WITHIN THE DIMENSIONAL LIMITATIONS SHOWN ON DRAWING AND INITIALLY LOCATED TO ALLOW FOR MAXIMUM TOOL LIFE.	
MATL SPEC		FINISH	
DRW myork		DATE 10/10/2019	SCALE NTS
		FINISH GOOD WT GRAMS/PIECE	
UNLESS OTHERWISE SPECIFIED, DIMENSIONS ARE IN MILLIMETERS, DIMENSIONS IN BRACKETS [ ] ARE INCHES DIMENSIONING AND DO NOT INCLUDE PLATING. TOLERANCING TO BE INTERPRETED IN ACCORDANCE WITH ANSI Y14.5M-1994			
3RD ANGLE PROJECTION			
			
TITLE			
PSX SIZE 3XL DIN (DB) FUSE OUTLINE			
 <b>Littelfuse®</b> CHICAGO, ILLINOIS 60631		REVISION  D	DRWG NO. OL-PSX3XLDB0000
		SHEET 1 OF 1	